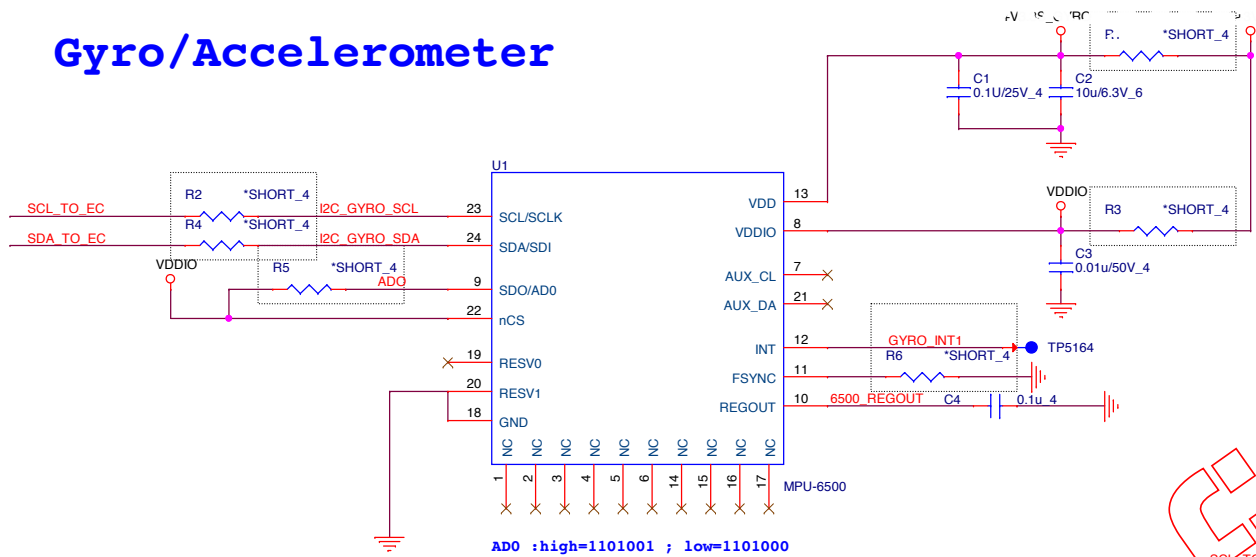
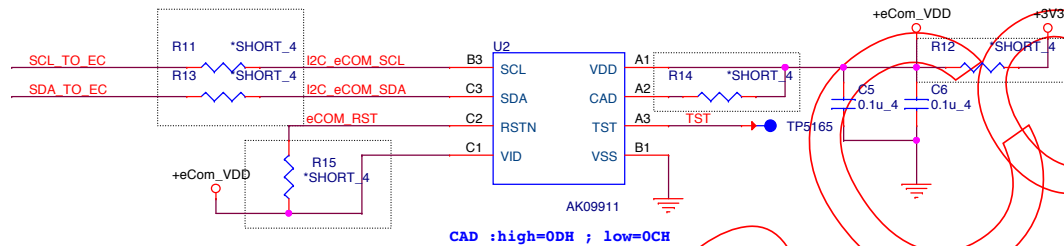


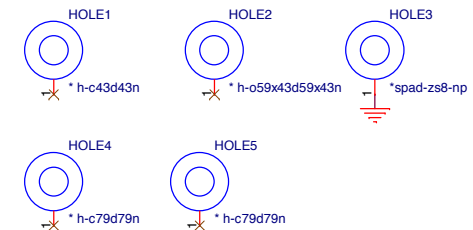
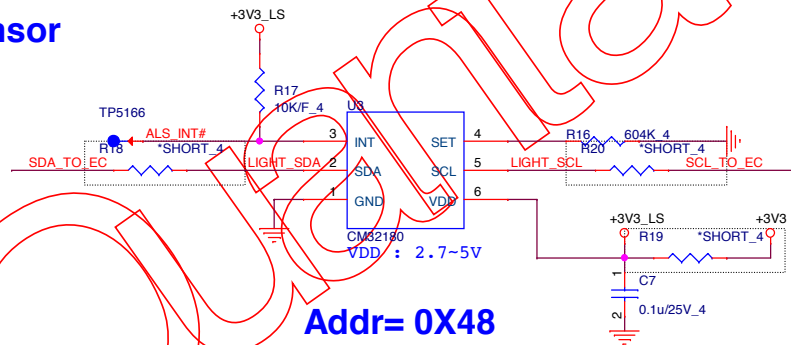
Gyro/Accelerometer

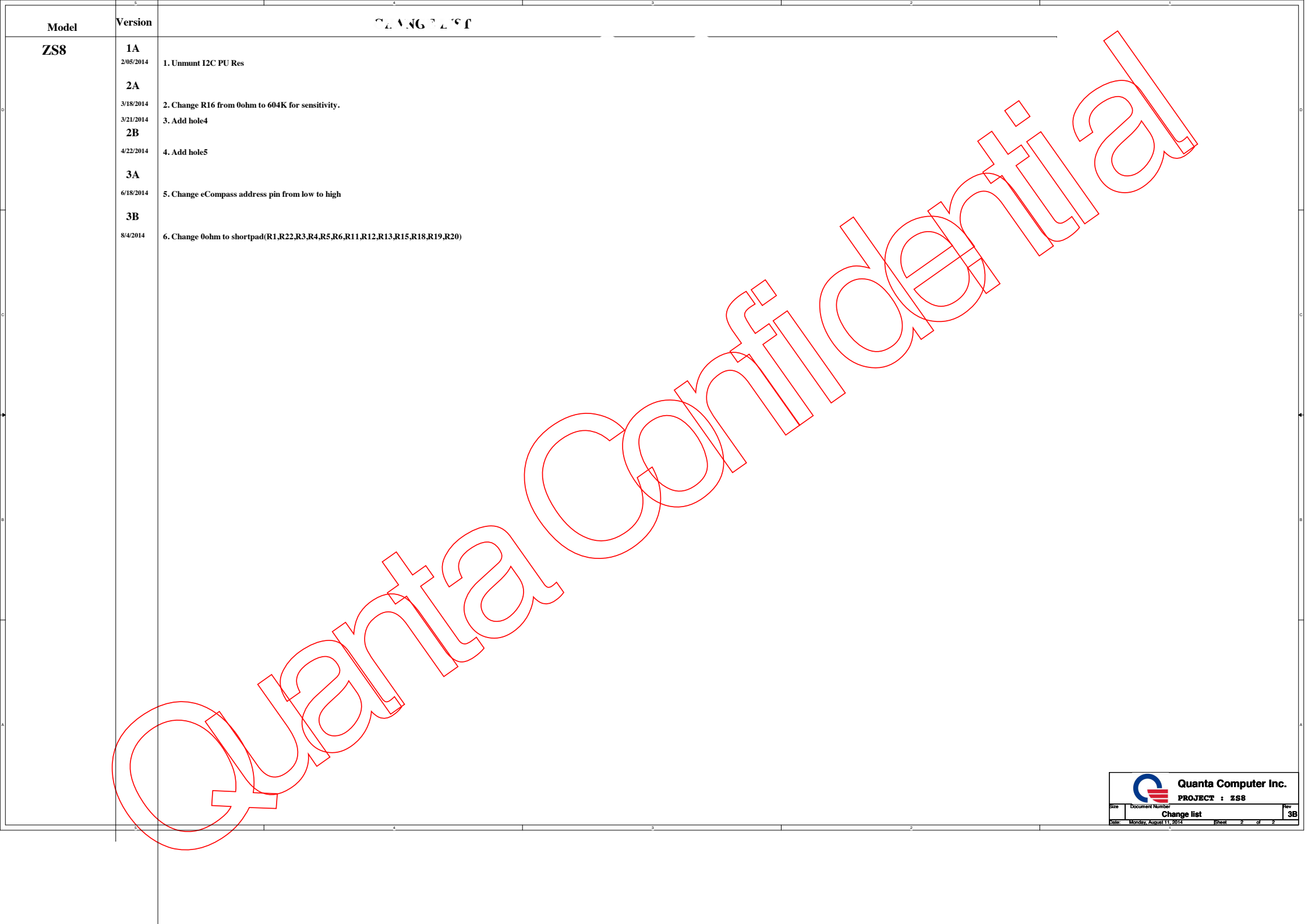


eCompass



Light sensor





| Model | Version | CHANGE LIST |
|-------|-----------|--|
| ZS8 | 1A | 1. Unmunt I2C PU Res |
| | 2/05/2014 | |
| | 2A | |
| | 3/18/2014 | 2. Change R16 from 0ohm to 604K for sensitivity. |
| | 3/21/2014 | 3. Add hole4 |
| | 2B | |
| | 4/22/2014 | 4. Add hole5 |
| | 3A | |
| | 6/18/2014 | 5. Change eCompass address pin from low to high |
| | 3B | |
| | 8/4/2014 | 6. Change 0ohm to shortpad(R1,R22,R3,R4,R5,R6,R11,R12,R13,R15,R18,R19,R20) |
| | | |